

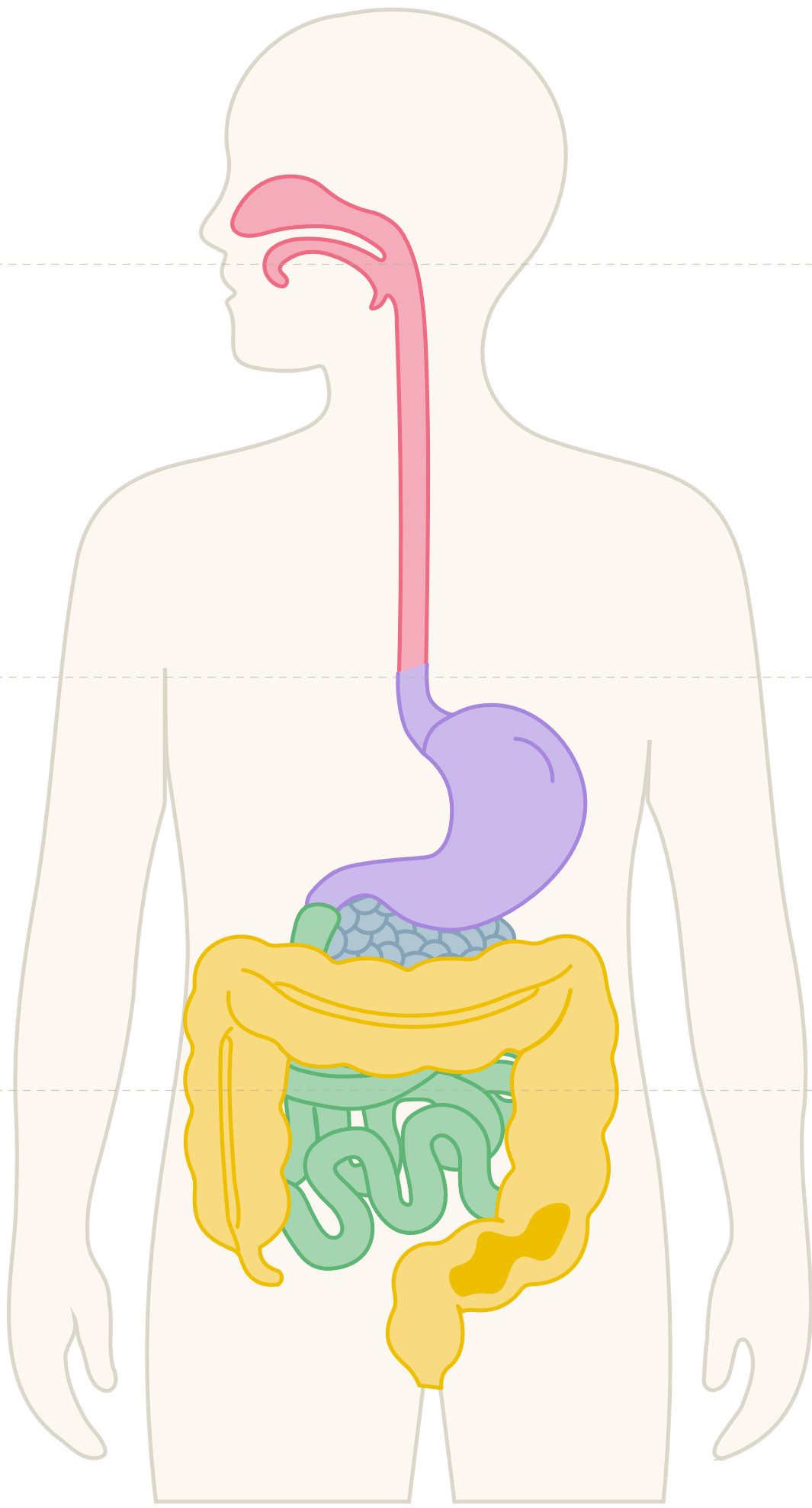
# lupe

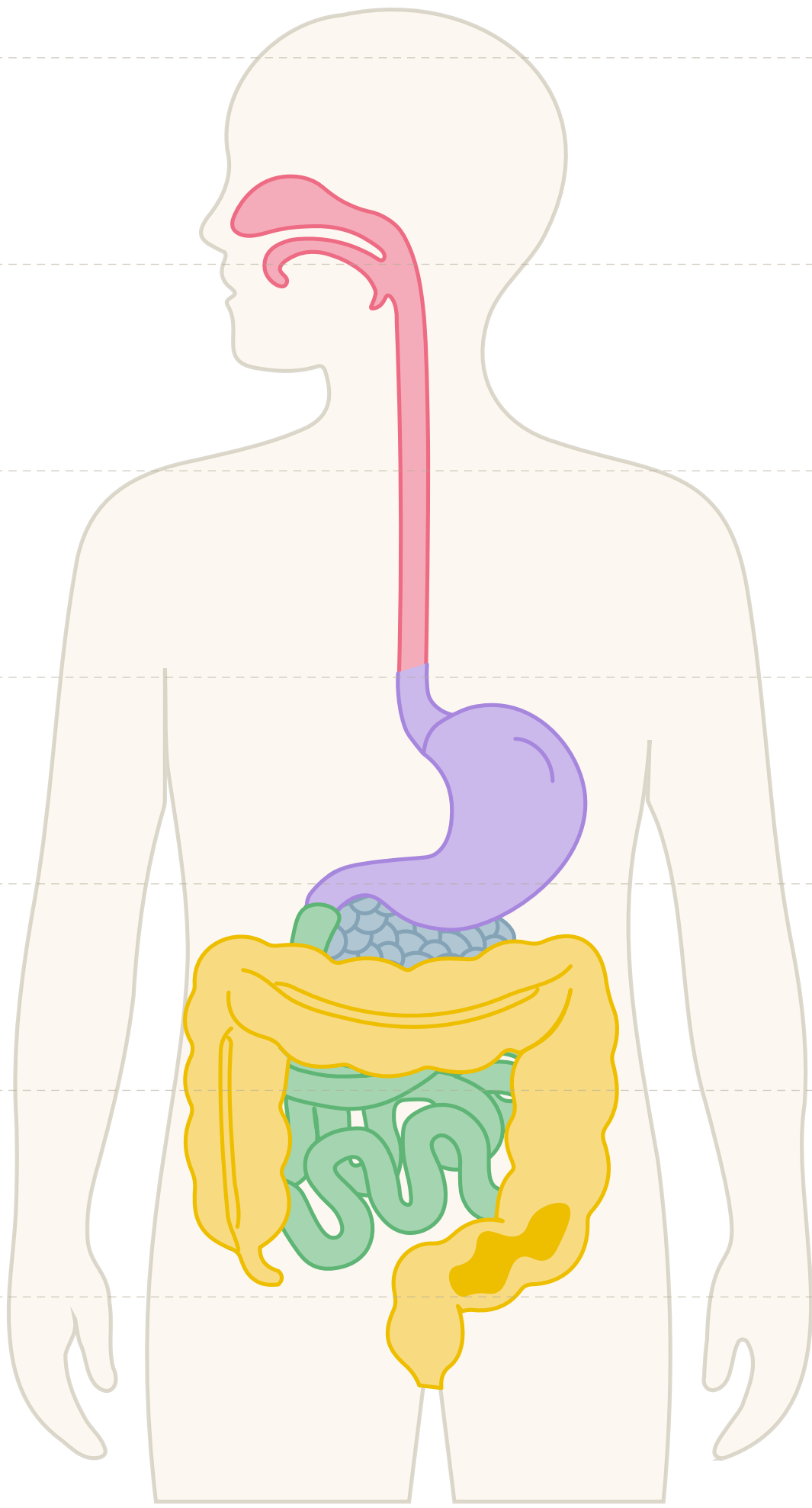
SCIENCE FOR LITTLE ONES

## Pack 6: The Digestive Tract

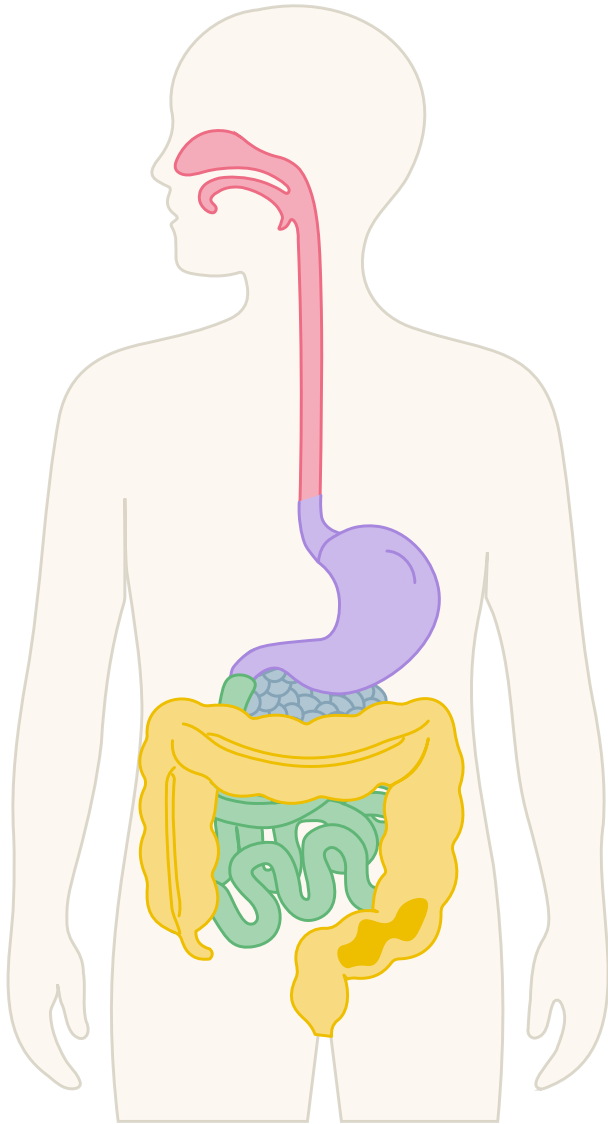
Body Strip Puzzle

2 difficulty levels · Ages 2-4





# The digestive tract



## ● Mouth

Your teeth break food into smaller pieces while saliva starts dissolving the starches.

## ● Oesophagus

A muscular tube that squeezes food down to the stomach in waves called peristalsis.

## ● Stomach

A stretchy bag that churns food and mixes it with strong acid before passing it on.

## ● Pancreas

Tucked behind the stomach. Makes enzymes that break food down further and controls blood sugar.

## ● Small intestine

A long, winding tube lined with tiny finger-like villi that absorb nutrients from your food into the blood.

## ● Large intestine

Absorbs the water your body can still use. Home to trillions of helpful bacteria that break down fiber and make vitamins.

# How to play

## 1. Print

Print the easy page, the hard page, or both.  
Use thick paper or card stock for best results.

## 2. Cut

Cut along the dashed lines to separate the strips.  
The easy version has 4 strips, the hard version has 8.

## 3. Play — easy mode

Mix up the 4 strips. Ask your child to put them  
back in order from top to bottom to rebuild the body.  
The large sections make it easier to see which edges match.

## 4. Play — full mode

Mix up all 8 strips. Put them back together so the  
body lines up. Match the edges carefully so every line  
connects. Use the reference page to check.

## Tip

Laminate the page before cutting for a more durable puzzle.  
Check the reference page for the correct order and  
what each organ does.