

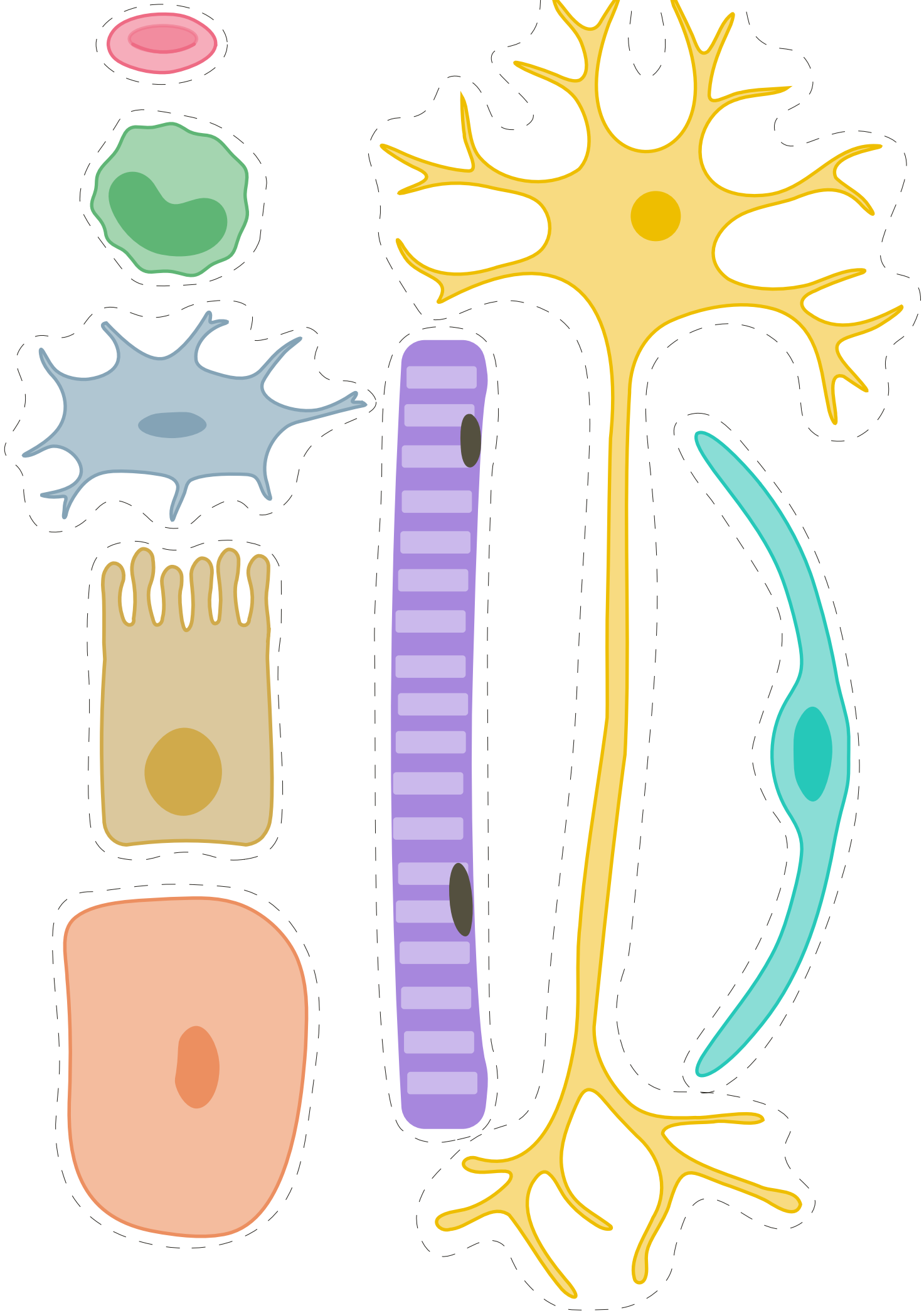
lupe

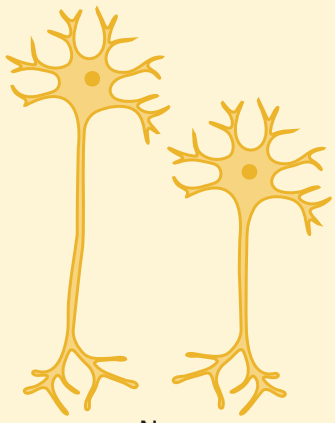
SCIENCE FOR LITTLE ONES

Pack 2: Cell Types

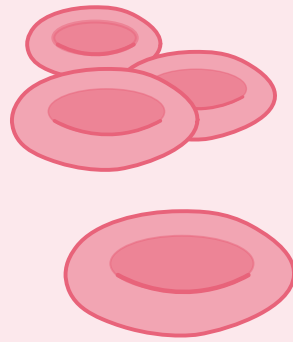
Sort by Size

8 cells · 2 difficulty levels · Ages 2-4





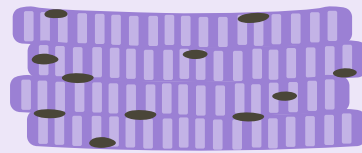
Neuron



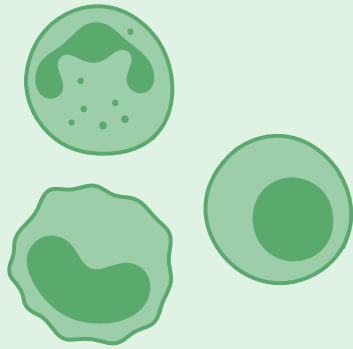
Red Blood Cell



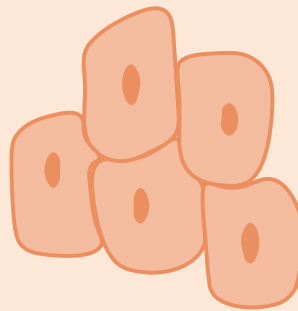
Lung Cell



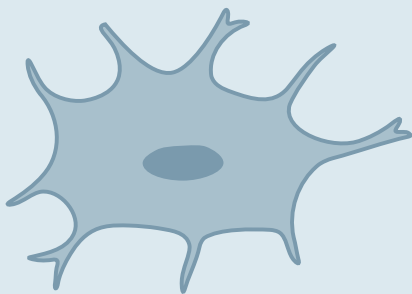
Muscle Cell



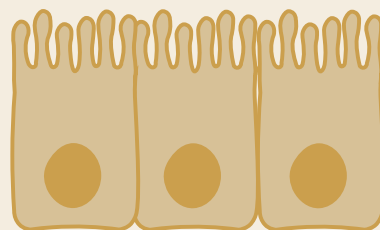
White Blood Cell



Skin Cell



Bone Cell



Intestinal Cell

1

2

3

4

5

6

7

8

Smallest to biggest

1 **Red Blood Cell**

About 7 micrometers across.

The smallest cell type in the body, shaped to fit through the narrowest blood vessels.

2 **White Blood Cell**

About 12 micrometers.

A bit bigger than red blood cells, with sizes varying by type.

3 **Bone Cell**

About 25 micrometers.

Star-shaped, with thin processes that reach through the bone matrix.

4 **Intestinal Cell**

About 25 micrometers tall.

Columnar in shape, with finger-like microvilli on top.

5 **Skin Cell**

About 30 micrometers at the surface.

They flatten into protective shields at the skin's outer layer.

6 **Lung Cell**

About 50 micrometers wide.

Extremely flat so oxygen can pass through into the blood.

7 **Muscle Cell**

Millimeters to centimeters long.

Single muscle fibers can be visible to the naked eye.

8 **Neuron**

Up to a full meter long.

The longest single cells in the human body, running from the spine all the way to the toes.

Scale note

The cells on this page are drawn at relative size, but not at true scale. The order is honest. Neurons really are the longest cells, red blood cells really are the smallest. The exact ratios are compressed. In real life, a red blood cell next to a neuron axon would differ by a factor of 100,000, and that's too dramatic to fit on a single piece of paper.

How to play

1. Print

Print the cell-shape cutouts page and the cards page. Use thick paper or card stock for best results.

2. Cut

Cut out the 8 cell-shape pieces and the 8 square cards. For the more challenging version, also cut out the numbered tiles.

3. Play — match the shapes

Place the cell-shape cutouts on the table. Each one is drawn at a different size. Ask your child to line them up from smallest to biggest, then match each square card to its cell shape by looking at the illustrations.

4. Play — numbered tiles

Spread out the 8 square cards face up. Give your child the numbered tiles, 1 (smallest) through 8 (biggest). Ask them to place each number on the cell they think matches that rank, from memory.

Tip

Laminate the cards and tiles for endless reuse. Check the answer key for the correct order and some fun facts about each cell.